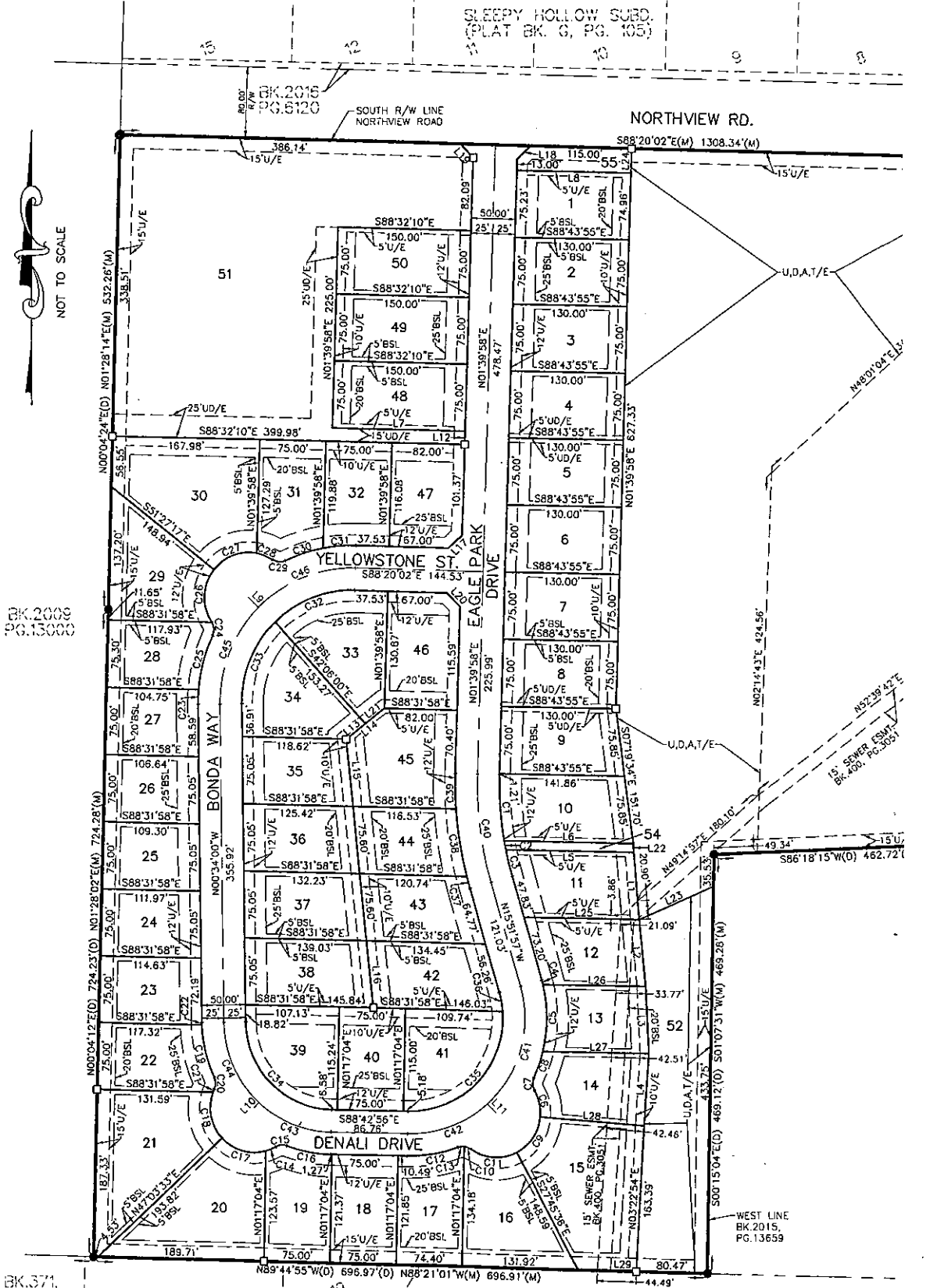


EAGLE PARK

A SUBDIVISION IN THE CITY OF NIXA, CHRISTIAN COUNTY, MISSOURI

OWNER/DEVELOPER: EAGLE PARK, LLC

SLEEPY HOLLOW SUBD.
(PLAT BK. G, PG. 105)



NOT TO SCALE

BK. 2008
PG. 13000

BK. 371,
PG. 7681

DOGWOOD ESTATES PHASE 2
(PLAT BK. H, PG. 530)

EXHIBIT DRAWING



SHAFFER & HINES
CONSULTING ENGINEERS - REGISTERED LAND SURVEYORS
DBE CERTIFIED COMPANY
P.O. Box 493, Nixa, Missouri, 65714
Tel: (417) 725-4663 - Fax: (417) 725-5230
Email: shane@shafferhines.com
SHAFFER & HINES, INC. CERTIFICATE OF AUTHORITY LICENSE NO. 15-383-D